



ALPADIA
PATHWAYS
by Kaplan International

2025 PATHWAY PROGRAMMES

Pathway Programmes to Studienkollegs, Bachelor's and Master's degrees for students and job seeking programmes for international professionals

France • Switzerland • Germany

www.alpadia.com

Get ready for academic and professional success!

With over 20 years of experience in the study abroad industry, Alpadia has been helping international students inspire their future through language immersion. The aim of our pathway programmes is to help international students and professionals make their dreams of studying or working abroad a reality. We provide students with clear routes to higher education and careers abroad.

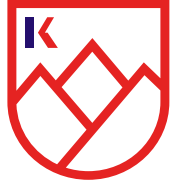
Study in Europe

University Pathway Programmes
University Pathway (bachelor's or master's studies)
Studienkolleg Preparation in Germany

Work in Germany

Career Pathway Programme
Jobseekers looking to enhance their CV





UNLOCK A WORLD OF POSSIBILITIES



You've just stepped off a plane, the air filled with unfamiliar sounds and sights. Your heart races with excitement as you realize — this is it. Your language-learning adventure has begun!

At Alpadia, we're not just teaching languages; we're crafting life-changing experiences. For over a century, we've been the storytellers of countless student journeys, each one unique and inspiring. Imagine yourself strolling through charming European streets, confidently ordering coffee in a new language, or sharing laughs with friends from across the globe. This isn't just a daydream — it's the Alpadia experience.

As you enter our school, you're greeted by expert language instructors eagerly awaiting to guide you through your linguistic journey. Our well-trained team of professionals is dedicated to supporting you every step of the way, from grammar challenges to cultural insights. We believe that true language mastery happens beyond textbooks. It's in the vibrant conversations at local markets, the shared meals with your international roommates, and in those magical moments, you realize you're thinking in a new language without even trying.

Every week, our schools become a melting pot of cultures as new faces from around the world join our community. You'll find yourself surrounded by kindred spirits, all eager to explore, learn, and grow together. Remember, this journey is about more than just conjugating verbs. It's about discovering a new version of yourself — one who's more confident, culturally aware, and ready to take on the world.

Let's embark on this adventure together!

Mattias Ysebie

Operations Director

Click on the
page numbers
to navigate to
each page



Content

- 5 University Pathway Programme**
- 6** Why Choose a University Pathway Programme
- 7** Who is the programme for?
- 8** Where can I study?
- 10** University Pathway in France
- 12** University Pathway in Germany
- 14** What are my study options?
- 15** How does it work?
- 16** Language course and package fees
- 17 Germany Career Pathway Programme for international professionals**
- 18** Why choose a Career Pathway Programme?
- 19** Your profile /
Where can I pursue my career?
- 20** How does it work?
- 21** Language course and package fees
- 22 Student Support Services**
- 23** Support upon enrolment
- 24** Support after arrival
- 26** Support at the end of the programme
- 27** Alumni network
- 28 Accomodation**
- 29 Transfers**
- 30 Next Steps**
- 31 Terms & conditions**

University Pathway Programme

Take your education further with Alpadia!



“

I feel confident in my language skills now, and it makes me excited for the future. Therefore, my advice to anyone thinking about applying to Pathways is to just do it. Everyone should experience what it's like to study abroad, and it's never too late to apply. This course has changed my life – now let it change yours.

Duygu

Alpadia Pathways student from Turkey

”

Why Choose a University Pathway Programme

If you want to pursue a degree abroad, Alpadia serves as a bridge to help you enter a foreign university and make sure you fulfil all requirements. These are the steps you'll take on the programme.

1

Once you've completed high school or university studies in your home country, we'll help you gain access to an undergraduate or postgraduate degree at a great university abroad



2

If you don't meet the necessary language and/or academic entry requirements for a direct entry to university, our pathway programme will prepare you accordingly



3

Study our pathway programme in the country where you will later achieve your degree. The goal of this time before your programme is to learn more about the local culture, integrate academically and, most importantly, improve your language level



4

Once the pathway programme ends, you'll enrol in your chosen bachelor's or master's degree at one of your desired universities and carry on with your studies



Start university fully prepared for the challenges ahead!

The benefits of taking a pathway course are endless. The most important one is being fully prepared for your life and studies abroad. The programme will enable you to get into highly reputed European universities and access excellent tuition. You'll also make lifelong friendships with people from all over the world. Getting a university education is just the beginning. A good degree will open up exciting opportunities for a successful career.

Who is the programme for?

Our University Pathway Programme is designed for international students interested in pursuing a degree in Europe. The programme will help you build your language skills, adjust to living and studying abroad, and give you a better chance of admission to your dream university.



Where can I study?



France

France is not only the world's number one tourist destination, it's also a fantastic place to study, offering a multicultural experience and a rich social life. Affordable tuition fees — even for private institutions — mean education is accessible. Depending on the city, the cost of living is also reasonable. France offers vibrant campus cities like Paris, Lyon, Nice and Montpellier to name a few, providing students with a diverse learning experience in some of the most beautiful cities in Europe. As French is the fifth most spoken language in the world, studying in France and learning the language will be a great advantage in your future academic endeavours, career and life.



Switzerland

Switzerland's most notable strengths include innovation, diversity, precision technology and education. The country ranks high in economic competitiveness, production, human development and standard of living. Not only is Switzerland one of the most attractive places to live in the world, it's also a uniquely multicultural and multilingual place, with four national languages. The breathtaking landscapes, excellent transport links, the generous variety of cultural and leisure activities, along with the superior quality of higher education, all make Switzerland a top location to study in.



Germany

Germany offers a high standard of living to both its own citizens and ambitious international students. Some of the advantages of studying in Germany — regardless of your nationality — include: almost free-of-charge education at public universities and low cost private universities, work allowance of 20h/week from the moment on you start your course at Alpadia, low living costs, international prospects and an 18-month jobseeker visa upon graduation. It is all these reasons and more that make Germany our most popular destination.



University Pathway in France

- Why choose France for higher education?
- One of the top educational systems in the world
- An exceptional cultural dynamism
- France is at the crossroads of Europe
- Thanks to a network of partnerships between top companies and higher education institutions, studying in France is a career booster
- Graduate with a French degree recognized by the Ministries of Education or Labor



Our Alpadia school in Lyon

Minimum age	16
Language	French
Student capacity	50-100
Classrooms	5

Our school is in the heart of the city's cultural and festive life in Lyon's centre. The beautiful 19th century building is located on the "Presqu'île" (peninsula), overlooking the Rhône and a short walk from the Saône. The school has spacious and bright classrooms with high ceilings.

Only a stone's throw away from the biggest square in Lyon, straight after class you can soak up the atmosphere in the numerous nearby cafés and restaurants, where Lyon's students meet.

The school has direct access to the best pedestrian shopping areas in Lyon and there is a subway station and a bus stop less than five minutes' walk away from the school.



Our partner schools

All programmes include hands-on training, practical experience and internships. With a unique network of companies and alumni, it is easier for students to find an internship or a job in France.



10
Destinations



22
Schools



100
Programmes



10 000 Partner
Companies

Study Areas

AGRIBUSINESS

Agribusiness Management, Land Development

BUSINESS

Business Development, Management, Marketing, Negotiation

COMMUNICATION

Broadcasting, Digital Communication, Journalism, Strategy

COMPUTER SCIENCES

E-Commerce, Webmarketing, Web & Mobile App Development

DESIGN

Fashion & Luxury, Interior Architecture, Interior Design

ENTREPRENEURSHIP

Management, Social Entrepreneurship

ENVIRONMENT

Green Economy, Land Development

FINANCE

Accounting, Corporate Finance

FOREIGN AFFAIRS

Foreign affairs, Geopolitics, Humanitarian Program, Management

HEALTH INDUSTRIES

Health Industries, Management

HUMAN RESOURCES

Human Resources, Management

TOURISM

Tourism & Hospitality, Management, Tourism Industry

University Pathway in Germany

Why choose Germany for higher education?

- Paid part-time work while on Bachelor or Master while taking German study-prep-course
- 18-month post study work permit
- Easy access to a secure job market
- World-class education & affordable living costs
- Abundance of outstanding courses and universities
- Globally recognised degrees
- Vibrant student life & endless activities on offer



 420+
Higher education
Institutes

 100+
Universities

 9K+
Bachelor
programs

 10K+
Masters
programs

Study Areas

BUSINESS

Business Administration, Management, Marketing, Logistics

ENGINEERING

Mechanical Engineering, Electronical Engineering, Civil engineering, Industrial Engineering, Mechatronics, Robotics

IT

Computer Sciences, Computer Engineering, Applied Computer Sciences, Business Informatics, Medical Informatics

LIFE SCIENCES

(Medicine), Bioinformatics, Biotechnical Chemistry

MEDIA

Media Informatics, Digital Media



Our Alpadia school in Berlin

Minimum age 16

Language German

Student capacity 220-360

Classrooms 25

In the Schöneberg district, a stone's throw from the main attractions of the capital, our language school offers students a unique opportunity to attend German classes in one of the most beautiful areas of the city. Many cafés, bars and restaurants can be found along the lively streets of this central district, easily reachable by public transport. From the metro station or the bus stop, you will be two minutes away from the spacious and welcoming premises of our course centre. Along with its large and bright classrooms, equipped with first-class learning facilities, the school has a conference room, an internet café as well as a spacious lounge, where students can meet up during the breaks and buy refreshments.

Our Alpadia school in Freiburg

Minimum age 16

Language German

Student capacity 120-200

Classrooms 15

Founded in 1972, our language school in Freiburg is established in an elegant neoclassical house located in the town centre. Here, you will find a stimulating, multicultural environment, conducive to learning German rapidly.

The course center has comfortable classrooms, a cafeteria as well as a spacious terrace and wonderful garden. After your German classes, set off to discover the city. From the school, you will be close to the university, the numerous shops of the historical centre and its beautiful Gothic cathedral. And if you like to ride bikes, take advantage of the city's 400 kilometres of cycle lanes.

* Admission restrictions apply.

Get access to the whole German higher education, any university, any city*

**Accreditations
& certifications**

ACCREDITED

Eaquals
Excellence in Language Education

**ÉTUDES
EN FRANCE**

CSN


LE MINISTRE DE L'ÉDUCATION
NATIONALE, DE L'ENSEIGNEMENT
SUPERIEUR ET DE LA RECHERCHE

[fla]
QUALITÉ
FRANÇAIS LANGUE FRANÇAISE

AL TO | WHERE
LEADERS
MEET

**FRANCE
EDUCATION
INTERNATIONAL**

What are my study options in Germany?

Direct access to university — University Pathway programme



Bachelor's Degrees

Germany offers a wide range of degree programmes at bachelor's level. In order to be able to directly start your bachelor's studies in Germany you need to have a direct entrance qualification. This depends on your country of origin and your study background. Within the pre-evaluation phase we will precisely check your academic background and take into account your university entrance qualification in order to start your University Pathway in Germany.

Master's Degrees

With over 10'000 master's degrees offered in more than 400 higher education institutions, Germany has become one of the most attractive destinations for international students to pursue their master's degrees in. Whether your academic background allows you to study at master's level in Germany depends on several factors, including your country of origin, recognition of your university and your degree in Germany, the curriculum of your previous studies, and your Grade Point Average. We will assess your academic background during the pre-evaluation phase of the University Pathway programme.



Indirect access to university - Studienkolleg preparation

Studienkolleg

Studienkollegs are public educational institutions in Germany which offer preparatory courses (foundation year courses) for international students hoping to study at a German university. You will need to attend a Studienkolleg before applying to a German university if your secondary school certificate is not recognised as equivalent to the German [Abitur](#). The teaching language in all Studienkollegs is German. Studienkollegs usually have an entry test which always contains German language test at B2/C1 level and sometimes also includes a mathematics test.

Studienkollegs offer two semesters of preparation for the final exam, called Feststellungsprüfung (FSP) which contains subjects related to your desired field of studies in the future.

Once you have passed the FSP, you can directly apply to your desired study programme at any university in Germany.

Online prep-course for Studienkolleg

In order to prepare students in the best way possible for the entrance exam of the German foundation year (Studienkolleg), we offer online preparatory courses with the possibility to choose preparation for specific Studienkollegs.

The booking of the prep-course can be processed on-site after choosing the desired Studienkollegs of application and the minimum German level to take the online-prep-course is B1/B2.



How does it work?



Pre-evaluation

1 week



Application & Visa process

approx. 8 - 36 weeks
varies across countries



Language courses

16 - 50 weeks



C1 Exam



Preparation for entry test^A

online prep-course
from level B1/B2 on



University placement

6-8 weeks



University entrance

Starting in October or March

Pre-evaluation process (free-of-charge)

- You'll upload your academic documents and fill out the evaluation form
- We'll get back to you and make sure we have all of the required information and documents
- We'll evaluate your study background along with your academic interests
- You'll receive your personal evaluation results. This will include a timeline and a roadmap outlining the next steps

Application process (mandatory)

- We'll guide you through the authorisation, translation, notarisation, and submission of your documents
- We'll help you with your applications for university admission
- You'll receive at least one conditional Letter of Acceptance (CLA) or VPD from a university
- You'll receive your suggested study plan

Visa assistance process (for non-EU applicants)

- We'll guide you through the preparation of your documents for your visa application
- We'll assist you in setting up your blocked-account and health insurance in Germany, France or Switzerland
- You'll apply for the right kind of visa with the necessary set of documents
- You'll receive your study preparatory visa and get ready for joining your pathway programme at our Alpadia schools

Intensive preparatory language courses — at least 12 weeks

- We'll help you obtain up to C1-Academic German or French certification
- You'll take language classes with us and take official language tests in Berlin, Freiburg, Montreux or Lyon.
- You'll benefit from our wide selection of accommodation options
- You'll be able to choose from a range of immersive activities and excursions while you're learning German or French
- You'll receive student support and academic counselling from our team
- You'll learn a language with likeminded international applicants, make lifelong friendships and exchange information regarding your study options in Germany, France or Switzerland
- You'll begin to integrate into a different culture and visit your desired universities/cities to shortlist your options

University placement process (optional)

- We'll evaluate your chances of getting a place in the field of study at your desired universities/Studienkollegs (Germany only)
- We'll assist you with shortlisting the programmes based on your personal goals, admission criteria, deadlines, location and more
- We'll help you with preparing your documents including your CV and personal statement
- We'll assist you with notarising the copy of your original documents
- We'll proceed your application for up to three different universities or Studienkollegs
- Once you received an admission offer of a university or passed the entrance exam to Studienkolleg we'll help to enrol and assist to arrange your national public health insurance, apply for a new residence permit and obtain student status and a student visa

^A For intake winter semester in October, for intake summer semester in March

Language course and package fees

University Pathway

20 or 25 lessons per week

Minimum age 16

Levels Beginner to advanced A1* > C1

Duration 16 - 50 weeks
(for more details, see tables on next page)

Start dates Every Monday, year-round

Programme

University 20: U20

Our University 20 courses are an excellent choice if you want to improve your general linguistic communication skills and still have free time on your hands.

University 25: U25

The University 25 offers a more in-depth study of the language thanks to five additional lessons per week dedicated to oral communication. You'll improve your communication skills through roleplays and simulation exercises. You'll take your U20 OR U25 course for the necessary duration followed by four weeks of an exam preparation course before your language exam.

*** Specific start dates for absolute beginners > A1**

Please consult our centre pages for specific information on course start dates.

GERMANY ONLY

Online prep-course for Studienkolleg

Levels

Minimum German language level B1/B2

Booking

on-site after choosing the Studienkollegs possibility to choose preparation for online

Package Fees



Pre-evaluation

FREE



Application process

**CHF/€ 865
(mandatory)**



University placement

**CHF/€ 525
(optional)**



Germany Career Pathway Programme for international professionals

Let us help you excel in your career

From day one, we'll guide you in exploring career opportunities and understanding the German job market. With our expert support, you'll experience a smooth transition to Germany.



Why choose a Career Pathway Programme?

Alpadia's Career Pathway Programme for international professionals includes:

- Assistance with obtaining a job search visa for Germany
- Support for a smooth transition once you have secured a job offer
- Creation of a detailed job search plan, including document preparation
- German language training tailored for professional and personal proficiency
- Evaluation of your academic and professional background to assess job opportunities in Germany
- Optimised preparation for job interviews



Your profile

The Career Pathway programme in Germany is right for you if:

- You are not older than 40 years
- You have an academic degree of a recognized university
- You have at least 2 years experience in your field
- You have German knowledge of A1 or English knowledge of B2
- You are ambitious, dynamic and ready to embrace a new culture

Where can I pursue my career?

With Germany's rising demand for specialists, international professionals have a unique chance to enter the job market. Our Career Pathway Programme ensures a smooth transition, supports your job search, offers the flexibility to work part-time and attend on-site interviews. Take advantage of our extensive experience and network of partner companies.



How does it work?



Pre-evaluation
1 week



Visa process



Arrival assistance



Language courses
12-50 weeks



Job search coaching



Change of visa title
approx. 8-12 weeks



Starting the new job

Pre-evaluation process (free-of-charge)

Before you embark on your job search in Germany, we will examine your academic and professional background to confirm your visa eligibility and job prospects. Upon a positive evaluation, you will be provided with a customised job search roadmap and timeline.

Visa process

We'll navigate you through the visa application process, covering everything from document preparation, translation, and notarisation to writing and reviewing your motivation letter, opening a blocked account and obtaining health insurance.

Arrival assistance

Once you've received your visa, you're ready to start your journey! Whether you need an airport transfer, accommodation, or assistance with paperwork upon arrival, we'll be happy to help while you're studying with us in Berlin or Freiburg.

German language course

Being able to speak German will make job hunting and settling down in Germany much easier. For that reason we offer specialised German courses at our schools in Berlin and Freiburg. Our courses will help you to pick up German quickly and learn about the local customs while starting your job search. If you need official German language certificates for your profession, we offer exam preparation courses - and you can take the exams with us on campus.

Job search coaching

Once you get settled in Germany, your job search will begin and intensify rapidly. Our Career coaching team will assist you with creating your German CVs and tailoring cover letters to different positions.

You'll also do mock interviews with your career coach to practice your interview skills and get perfectly prepared for landing a job. Upon receiving a job offer, your career coach will provide you with further advice on your employment contract in Germany.

Family

If your spouse is planning to join you, they have to be eligible for the same visa title and book our Career Pathway Programme. Of course, we'll offer a discount for your spouse.

Language course and package fees

Career Pathway

20 or 25 lessons per week

Maximum age

40

Levels

A2 > C1

Duration

12 - 50 weeks

Start dates

Every Monday, year-round

Programme

Career 20: C20

Our Career 20 courses are an excellent choice if you want to improve your general linguistic communication skills and still have free time on your hands.

Career 25: C25

The Career 25 offers a more in-depth study of the language thanks to five additional lessons per week dedicated to oral communication. You improve your communication skills through roleplays and simulation exercises.



Package Fees



Pre-evaluation

FREE



Application process package

€ 750



Arrival assistance



Language course

Variable according to duration



Job search package

€ 950



Spouse application process package

€ 0

Support and next steps



“

Everything has been impeccable and extremely efficient at my school: from the school staff, to the administration, the processing of course, the quality of information received before the trip, as the welcome at my arrival in school, the host family and the management of classes. I would study with Alpadia again!

”

Patricia

Alpadia Pathways student from Spain

Support upon enrolment

When you enrol, our team will send you helpful pre-arrival information about your accommodation, transfers, our school and your chosen destination. We are always here to help you with any questions or doubts you may have at any stage of the process.

Visa application guidance for non-EU applicants

If you are a non-EU national, you will need a national visa for a long term stay. We will help you with filing for the right type of visa.

Please allow at least three months for visa application and processing.

Health insurance

We can offer you an insurance policy to cover you during your stay with us.

Blocked account opening

If your nationality entitles you to a national visa for long-term stay in Germany (over 90 days), then opening a blocked account is one of the most important elements of your visa/residence permit application. Opening an online blocked account can be stressful, but we will assist you in every way we can.

Airport transfer

For a smooth arrival to your destination, an Alpadia representative can meet you at the airport when you arrive. We'll take you directly to your new home from the airport to ensure that your arrival is stress-free.



Support after arrival

We'll provide support throughout your course to make sure your experience is as enjoyable as possible.

Accommodation

Looking for short-term and long-term accommodation in another country can be tricky. For that reason, we offer you high-quality accommodation on and off campus, based on your needs and budget to provide you with peace of mind so you can focus entirely on your studies and professional development.

We offer the following accommodations:

Host family *from age 16*

Staying with a host family is a great way to learn about local culture, experience daily life with your hosts and learn everyday expressions.

We have excellent relationships with our host families and all of them meet our requirements in terms of quality.

Student apartment *from age 18*

Our student apartments are located in the town centre, close to our schools and various shopping areas, cafés and restaurants and are well served by public transport. Our apartments offer comfortable double and single bedrooms. Shared facilities include a TV, a fully-furnished kitchen, a washing machine and wireless internet access.

Residence *from age 16*

Our carefully selected residences are ideally located in the city centre, within 30 minutes of the schools and well served by public transport. Each residence provides our students with in-house laundry facilities, space to study and WiFi.

Self-catering homestay (only Berlin) *from age 18*

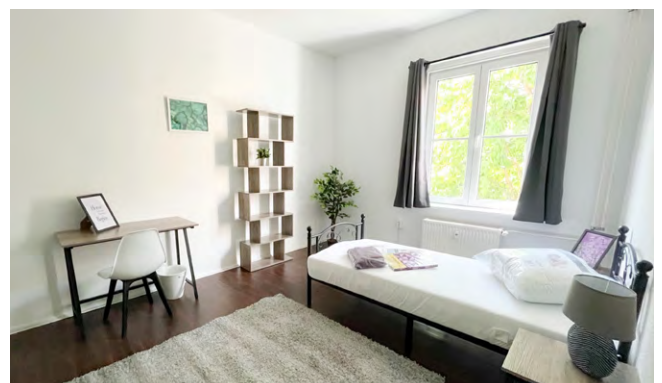
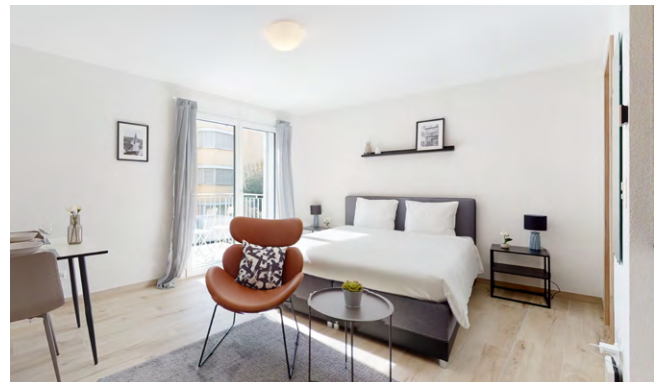
This very popular accommodation allows you to live with German people while enjoying some autonomy. Staying in a comfortable single bedroom, you will share the bathroom and communal areas with your flatmates and have access to the kitchen to prepare your meals.

Studio (only Montreux) *from age 18*

Our centrally located studio includes a fully-equipped kitchen, bathroom, TV and internet connection. It's an ideal option if you're in a couple or just looking for more independent and a higher level of privacy and comfort.

Hotel and Bed & Breakfast *from age 18*

Choose from a variety of hotels and B&Bs in and around the city centre, ranging from budget-friendly to luxurious.



Address registration

One of the first steps when you settle in Germany is to register your home address with local authorities. We'll guide you through the paperwork so you can register your address without hassle.

Residence permit application

If you are a non-EU citizen, you will need to apply for a residence permit (or long stay visa) in order to be able to stay in **Germany** or **France**. Our student support team will help you with booking an appointment, gathering the required documents, completing the necessary forms, and if necessary, fully preparing you for your interview at the immigration office of your city of residence.

24/7 support

No matter what, in case of an emergency, our team will always be there for you, any day, any time.

Included weekly activities

Explore the city, make new friends, and gain a deeper immersion in the language with our exciting events and activities. All our schools offer a packed schedule of things to do, from movie nights and dinners at local restaurants to tours of national landmarks and day trip. Whether you're a sports fan, an arts lover, a gourmet, or a thrill-seeker, our social program is full of opportunities to make your time at Alpadia unforgettable.

Bike around the lush Black forest in Freiburg, visit the prestigious museums of Berlin, explore the lake Geneva on a pedalo, or cruise on a vaporetto along Lyon... Make the most out of your free time!



Support at the end of the programme

Official language exam

Academic and Career Pathway Programmes usually end with an official test (TestDaF, Telc Hochschule or Telc Beruf). As approved test centres, our schools offer a variety of official exams which are the major requirement for entering higher education or receiving a work permit in Germany.

University/career placement

After our initial support with applying, visa assistance (where applicable), settling down and learning the language, you'll be ready to start your academic or professional journey ahead. Whether you're choosing between universities or careers, we're here for you.

Through personalised coaching, we'll get to know your needs and qualifications, and guide you through choosing the right option for you. From the moment you join Alpadia, you become part of our family.

Health insurance switch

It is very important to obtain the right kind of health insurance throughout your stay. Once you enrol at a university or sign your job contract, the first thing to take care of is to switch from your international traveller's health insurance to a German/French/Swiss statutory health insurance. We're here to help you through this process.



Follow us online and stay tuned for our next webinar dates live with our Pathways team!



Alumni Network

When you join any Alpadia programme, you become part of our alumni community along with all students that have graduated or are currently studying with us. As a part of this community you'll meet likeminded people, make new friendships, build business connections and share your experiences.



Diego

Chile 



Juan

Colombia 

When I moved to Berlin, I knew that I needed to improve my language skills before applying to university because at the time I didn't know any German! I decided to go with Alpadia Pathways because it seemed to be a good language school from the reviews.

My experience was great, and I love living in Berlin! It's such a fun city and it's given me a lot of independence; back in Chile I had everything done for me, and one of the most challenging parts of the course has been balancing making time to cook, study and go out with friends!

Now, I am a C1.2 level in German, and I'm hoping to apply to university in either Berlin or Munich and get a bachelor's degree in Electrical Engineering. Thanks to Alpadia Pathways I can now pursue my dream career – this course has truly exceeded my expectations!

The Pathway programme was very helpful for me. I really didn't know how to manage all those things that I had to do, like the visa requirements and my university application. Those things require a lot of information that it is somewhat overwhelming, that's why I really liked the programme.

The people at Alpadia that were helping me were really insightful, they knew what they were doing and they were really interested in me as well. They wanted me to succeed and help me apply to all the universities I wanted.

I strongly recommend the University Pathway Programme at Alpadia!

[!\[\]\(7d1d6890825e83a6a4a51febe2dcc7f3_img.jpg\) ***Have a look at Juan's path to his dream university!***](#)

Accommodation

Weekly fees, From Sunday to Saturday

Montreux (in CHF / Swiss Francs)

		1 week	2-3 weeks	4-7 weeks	8+ weeks
Homestay¹	B&B Single	305	295	285	260
	Half Board Single	350	340	330	305
	B&B Double	260	240	230	220
	Half Board Double	305	285	275	265
Riviera Apartment	no meals Single	330	305	295	285
	no meals Double	245	235	225	205
Les Alpes Apartment	no meals Single	330	305	295	285
	no meals Double ²	245	235	225	205
Aigle Residence	no meals Single	465	425	395	395
	no meals Double ²	370	340	315	315
Studio du Lac	no meals Single	465	425	395	395
	no meals Double ²	370	340	315	315

One extra night is available on arrival and/or on departure at 25% of the weekly accommodation rate; high season supplement does not apply to the extra night.

¹ Specific diet weekly supplement: B&B: CHF 25 | HB: CHF 40

² Only available for 2 participants booking this option together, fee per participant

Lyon (in € / Euros)

		1 week	2-3 weeks	4-7 weeks	8+ weeks
Homestay¹	B&B Single	230	220	210	200
	Half Board Single	290	280	265	250
	B&B Double	200	190	180	170
	Half Board Double	245	235	225	215
Loft Tempo Apartment²	no meals Single	325	305	295	285
	no meals Double	235	215	205	195
Villeurbanne Apartment	no meals Single	325	305	295	285
	no meals Double	235	215	205	195
La Guillotiere Residence	no meals Single	310	250	220	200
Truffaut Residence	no meals Single	310	250	220	200
Tempo Residence	no meals Single	310	250	220	200
Hotel Residence^{** 2,3}	no meals Single	380	380	380	380
Hotel Residence^{*** 2,3}	no meals Single	640	640	640	640

One extra night is available on arrival and/or on departure at 25% of the weekly accommodation rate;

¹ Specific diet weekly supplement: B&B: € 20 | HB: € 35

² Option to book an ensuite with private sink and shower for € 20 (Single) / € 10 (Double) per week extra

³ Not including local tourist tax to be paid directly at the hotel-residence

Berlin (in € / Euros)

		1 week	2-3 weeks	4-7 weeks	8+ weeks
Homestay¹	B&B Single	290	275	255	245
	Half Board Single	345	335	320	310
	no meals Single	230	210	205	195
	B&B Double	230	225	220	215
	Half Board Double	300	295	275	265
	no meals Double ²	180	175	170	165
	Pankstrasse Apartment	no meals Single	475	380	370
no meals Double		375	330	315	295
Silberstein Apartment	no meals Single	475	380	370	355
	no meals Double ²	375	330	315	295
Schulapartment Apartment	no meals Single	475	380	370	355
	no meals Double ²	375	330	315	295
CREON Co-living Apartment	no meals Single	475	380	370	355
David Friedlander Haus Residence	no meals Single	475	380	355	320
Staytoo Residence	no meals Single	475	380	355	320

One extra night is available on arrival and/or on departure at 25% of the weekly accommodation rate; high season supplement does not apply to the extra night.

¹ Specific diet weekly supplement: B&B: € 20 | HB: € 35

² Only available for 2 participants booking this option together, fee per participant

Freiburg (in € / Euros)

		1 week	2-3 weeks	4-7 weeks	8+ weeks
Homestay¹	B&B Single	295	275	255	245
	Half Board Single	350	335	320	310
	no meals Single	230	210	205	195
	B&B Double	235	230	220	215
	Half Board Double	305	295	290	275
	no meals Double ²	180	175	170	165
Kronenstrasse Apartment	no meals Single	495	400	370	340
	no meals Double	390	345	330	305
Laimacker Apartment	no meals Single	495	400	370	340
	no meals Double ²	390	345	330	305
Erwinstrasse Apartment	no meals Single	495	400	370	340
	no meals Double ²	390	345	330	305
Wirthstrasse Residence	no meals Single	495	400	370	340

One extra night is available on arrival and/or on departure at 25% of the weekly accommodation rate; high season supplement does not apply to the extra night.

¹ Specific diet weekly supplement: B&B: € 20 | HB: € 35

² Only available for 2 participants booking this option together, fee per participant

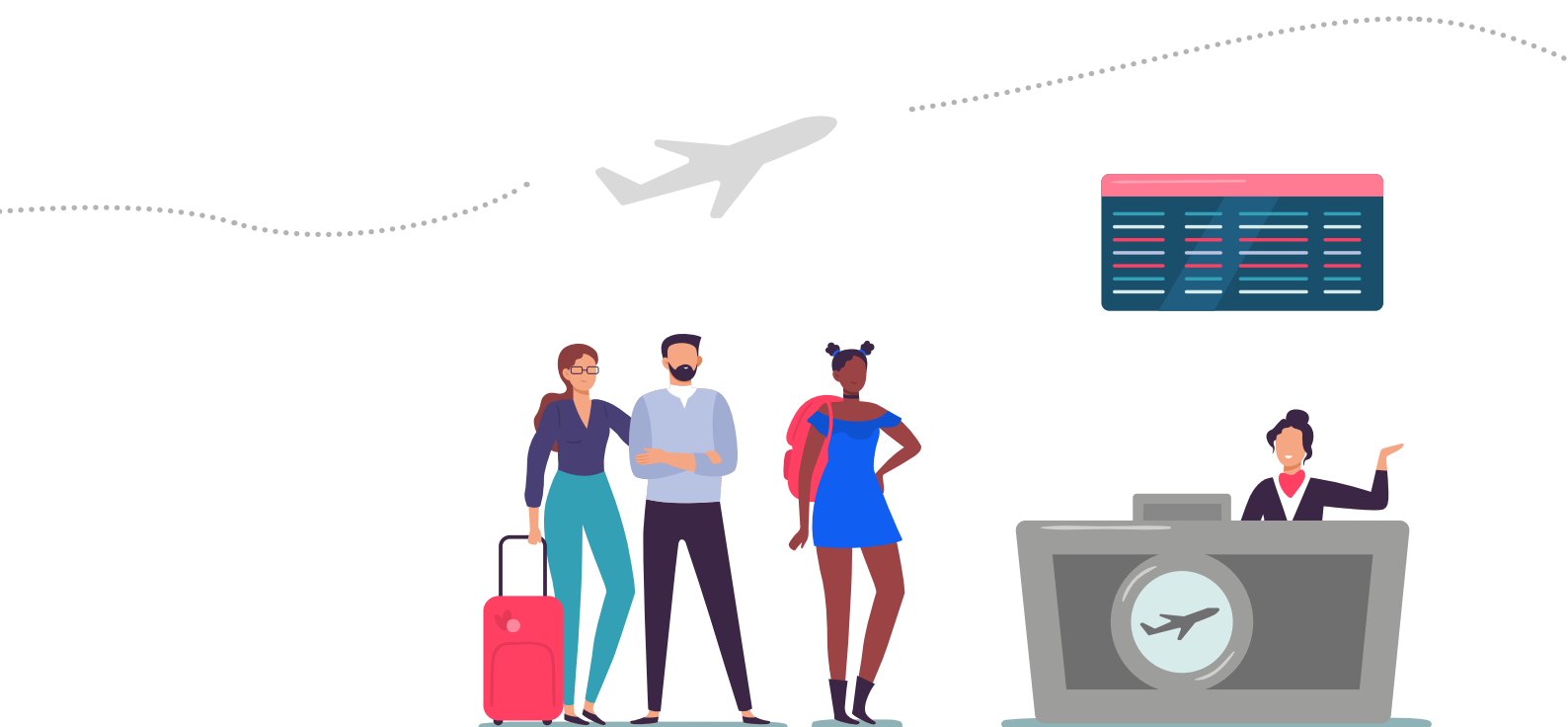
Transfers

CHF = SWISS FRANCS / € = EUROS

Our transfers are shared transfers with no more than 45 minutes waiting time (90 min in Freiburg).
The price for 2 or 3 people is only available for students booking together and with the same address.

ADULT SCHOOL	ONE WAY PRICE PER PERSON	1 PERSON	2 PEOPLE	3 PEOPLE
MONTREUX	✈ Geneva GVA / 🚆 Geneva Train station*	CHF 280	CHF 195	CHF 175
	✈ Zürich ZRH / 🚆 Zurich Train station*	CHF 940	CHF 650	CHF 465
LYON	✈ Lyon - LYS	€ 165	€ 125	€ 105
	🚆 Lyon Train Station*	€ 70	€ 35	€ 25
	🚆 Lyon Saint Exupery Train Station	€ 165	€ 125	€ 105
BERLIN	✈ Berlin Brandenburg BER	€ 145	€ 95	€ 80
	🚆 Berlin Train station*	€ 115	€ 75	€ 70
FREIBURG	✈ EuroAirport Bâle/Mulhouse EAP/BSL/MUL	€ 205	€ 165	€ 145
	✈ Zürich ZRH	€ 405	€ 325	€ 285
	✈ Frankfurt FRA	€ 615	€ 490	€ 430
	🚆 Freiburg Train station*	€ 40	€ 20	€ 15

* For 3 students or more, please inform us of the amount of luggages.



Next steps

1

Contact us, send all your academic certificates, CV, pre-enrolment form

2

Receive our Eligibility Timeline Assessment (ETA) which gives you a detailed evaluation and overview

3

When your roadmap is confirmed, you will receive a checklist from our team to **prepare your application** (translating/notarizing necessary documents, send to our Pathways team)

4

Receive your conditional admission (for students), or your recognition certificate of your academic background and profession (for job-seekers)

5

Prepare your visa application

6

Receive visa, **start your language course at Alpadia**

7

Start your language course at Alpadia

8

Finish language course and **pass language exam**

UNIVERSITY PATHWAY

9

Re-apply to university (or Studienkolleg; if studienkolleg: receive invitation to entry test and pass it)

10

Receive admission and **start your studies!**

CAREER PATHWAY

9

Career coaching and job application

10

Start your new job in Germany!



Terms & conditions

1. Registration and confirmation

All bookings received by Alpadia S.A. ("Alpadia") by post, e-mail or telephone and online registrations will be deemed to be valid. By signing and returning the online application form the participant is agreeing to enter into a binding contract with Alpadia. Confirmation of the booking will be made within a maximum of 5 working days following receipt of a valid booking (if the course booked is available). Once this booking confirmation has been issued, a legally binding contract based on these terms and conditions will be formed between the participant and Alpadia subject to the participant meeting all applicable immigration requirements. Where the registered person is an adult, that person will become a contract partner of Alpadia. Where the registered person is not an adult, their parent/guardian will become the contract partner of Alpadia. In that event, the parent/guardian must sign the contract and give their correct address and contact details. The person who is contractually registered to a language course will become a "participant", designated as such below. The person who signs the contract (either the participant themselves or, where the person is a minor, their parent/guardian) will be identified as a "contract partner", designated as such below.

2. Information provided at the time of registration

The contract partner expressly declares that the information provided at the time of registration for a language course is true and accurate. Any inaccurate information or omission may lead to immediate expulsion from the course (for example, if an "absolute beginner" overestimates their level of linguistic ability in order to be able to start a course on a date other than the official commencement date for "absolute beginners"). In that event, the costs of the course will not be refundable, either in whole or in part. At the time of enrolment, participants are required to take a compulsory language test online after confirming their booking. Alpadia reserves the right to refuse the booking if the participant fails to take the compulsory language test. Alpadia cannot guarantee that a participant will be placed in a class at their appropriate aptitude level if the participant does not take the online placement test.

3. Application fees

Alpadia will charge CHF/€ 865 of application fee for each booking. This fee is non-refundable. In the event of late registration (being two weeks or less before the commencement date of the relevant language course), participants will be charged an extra fee of CHF 45 (for bookings in Switzerland) or € 40 (for bookings in France and Germany) for express processing of their booking. Applicants of Career Pathways Programs are exempt from application fee.

4. Changes to course

Any change to school location, course downgrade, change in weeks booked or removal of additional service will be charged at € 70 / CHF 80 per change. No charge for upgrades. For postponement related changes, please refer to postponement policy.

Alpadia is not obliged to fulfil any change request. If changing to a location (or changing course) where fees are lower prior to the course start date, the difference in fees will be refunded. If the change occurs after the course commencement date, there will be no refund of the difference. If changing to a more expensive location or course, the difference in fees will be charged. All changes are subject to Alpadia's discretion and require approval of the Customer Care team. Participants will not be charged a change fee if they extend their course, but late homestay extensions may require a re-placement fee.

5. Postponement Policy

- Postponements will only be made on receipt of a valid written student request.
- Bookings may be postponed a maximum of two times within one year of the original booking date.
- Bookings may only be postponed by up to 6 months at a time and up to one year in exceptional circumstances.
- Your booking will be postponed honoring the original fees you have paid.
- Only one tuition promotion may be used at any time; any previously expired promotions will no longer be valid at the time of postponement; a current promotion, valid at the time of postponement, may be applied.
- Any additional incurred actual costs for accommodation postponements, regardless of notice provided, will also be charged.
- In all cases where a visa or visa support documentation has been issued, the relevant immigration authorities will be informed.

Postponements made less than 7 days before the arrival date on the Booking Confirmation Form, including failure to show up, will incur a fee of one week's accommodation and one week's tuition fee.

6. Conditions of payment

Fees will become payable immediately on receipt by the participant/contract partner of their confirmation of booking as follows:

- Deposit payment of 10% of the total invoice or a minimum fee of € 250/CHF 200 (whichever is more); and
- Payment of the premium for the health insurance (where such policies have been taken out by the participant).

The balance of the total fees for the course, accommodation and any extra activities must be paid at least four weeks prior to the

commencement date of the language course. Neither the course nor the accommodation will be deemed to have been paid for unless the relevant amount has been received into the account details provided by Alpadia upon confirmation of registration.

In the event of a booking made within 2 weeks of the commencement date of the language course, the contract partner acknowledges that the full amount is due at registration.

Payment of fees can be made online by credit card through Flywire or by bank transfer. Details of how to pay will be provided at the time of booking.

7. Payment period

In the event that the payment periods specified by Alpadia in the confirmation are not complied with, the contract partner will be held liable. In such circumstances, Alpadia reserves the right to refuse the participant entry to the course. No claims will be accepted by Alpadia that arise from the contract partner's failure to comply with the payment periods communicated to the contract partner.

8. Proof of payment

Participants may be asked to provide documentary proof of payment of the full fee for their course and accommodation either before or on commencement of the language course. Failure to do so may mean that entry to both the course and the accommodation will be refused. In the case of late registration, Alpadia will ask for proof before sending the pre-arrival documentation.

9. Cancellation – standard policy

This Standard Cancellation Policy shall apply except where varied by the specific provisions in clause 9 below.

Cancellation Notice	Charges & Refunds
Written cancellation notice provided 22 days or more before the arrival date listed on the booking confirmation form	<p>For University Pathway Programs (APP): You shall be refunded: 100% of the tuition and accommodation fee less the amounts set out below: (a) Application Fee (CHF/€ 865) (b) University Placement Fee (CHF/€ 525) (c) Any non-refundable Insurance Fee (d) Administration Fee (CHF 170 or € 135) (e) Courier Fee (CHF 125 or € 95) (f) Bank Charges (CHF 45 or € 40) (g) Transfer Fees</p> <p>For Career Pathway Programs (CPP): You shall be refunded: 100% of the tuition and accommodation fee less the amounts set out below: (a) Recognition & Visa process fee (€ 1490) (b) Career & relocation coaching fee (€ 3850) (c) Family reunion fee (€ 1730/ € 2850/ € 3450) (d) Any non-refundable Insurance Fee (e) Courier Fee (CHF 125 or € 95) (f) Bank Charges (CHF 45 or € 40) (g) Transfer Fees</p>
Written cancellation notice provided less than 21 days before the arrival date listed on the booking confirmation form, including failure to show up	<p>For University Pathway Programs (APP): You shall be refunded: 100% of the tuition and accommodation fee The following items shall not be refundable: (a) Application Fee (CHF/€ 865) (b) University Placement Fee (CHF/€ 525) (c) Any non-refundable Insurance Fee (d) Administration Fee (CHF 170 or € 135) (e) Courier Fee (CHF 125 or € 95) (f) Bank Charges (CHF 45 or € 40) (g) Transfer Fees</p> <p>For Career Pathway Programs (CPP): You shall be refunded: 100% of the tuition and accommodation fee less the amounts set out below: (a) Recognition & Visa process fee (€ 1490) (b) Career & relocation coaching fee (€ 3850) (c) Family reunion fee (€ 1730/ € 2850/ € 3450) (d) Any non-refundable Insurance Fee (e) Courier Fee (CHF 125 or € 95) (f) Bank Charges (CHF 45 or € 40) (g) Transfer Fees</p>
On written notification of a visa rejection and receipt of supporting documentation	<p>In the event that a participant is refused a visa and a copy of the original refusal document issued by the Swiss/German/French Embassy (as applicable) is supplied, Alpadia undertakes to reimburse the whole amount paid, less: (a) the Bank Charges of CHF 45 or € 40; and (b) the Courier Fee of CHF 125 or € 95. (c) For University Pathway Programme: Application Fee (CHF/€ 865) (c) For Career Pathway Programme: Recognition & Visa process (€ 1490)</p>

The amounts to be paid by the contract partner on cancellation must be received no later than 10 days following receipt of the cancellation invoice.

All refunds must be paid to the original payer's bank account or credit card and cannot be made to any other person.

10. Cancellation - Distance Selling Regulations

'Distance Contract' means a distance contract or an off-premises contract as defined in the Consumer Contracts (Information,

SWITZERLAND, FRANCE & GERMANY

Cancellation and Additional Charges) Regulations 2013 (as amended from time to time).

In the event of a Distance Contract, participants who are EU citizens shall have the right to cancel the legally binding contract formed in accordance with paragraph 1 of these Terms and Conditions if the participant/contract partner gives notice of cancellation to Alpadia within the fourteen (14) calendar day period beginning on the day on which the booking confirmation was issued by Alpadia.

- If a participant exercises their right to cancel during this fourteen (14) day period, they will receive a full refund of all amounts already paid by the participant less any fees charged for services already performed by Alpadia.

- If the participant has already commenced studying with Alpadia during the fourteen (14) day period, they must pay a reasonable charge calculated by Alpadia for the period of study undertaken.

- To exercise the right to cancel under the EU distance contract terms, the participant must inform Alpadia of the participant's decision to cancel this agreement by email to: bookings@alpadia.com.

11. Cancellation insurance

Alpadia recommends that contract partners take out a cancellation insurance policy. In the event that the participant has taken out cancellation insurance and then cancels their course, they will be responsible for notifying their insurers. Under no circumstances will a cancellation insurance policy render Alpadia liable for non-reimbursement of a course. Alpadia offers cancellation insurance for certain courses, details are available on request.

12. Termination

'Termination' means stopping or leaving all or part of the course or courses booked, or reduction in weekly lessons, including extensions, once the first course has started.

When determining the number of weeks completed, a partial week will be counted as a whole week, provided the student was present at least one day during the scheduled week. Used weeks of discounted tuition and accommodation packages will be charged at the full brochure weekly rate when any refund is calculated.

In all cases additional service charges (e.g. airport transfers, courier fees, application fees, medical insurance, program supplement fee, etc.) are non-refundable and written notification of termination must be given to the Customer Care team. Students who terminate their program may not be eligible to receive an Alpadia certificate and will not be allowed to stay in Alpadia accommodation.

Tuition

Students wishing to terminate must give 4 weeks' written notice to the Student Support Manager so we may refund remaining tuition fees. Tuition fees are non-transferable to other students.

Accommodation

In order to terminate their accommodation contract, students must give at least 4 weeks' notice in writing to the Student Support Service. The student acknowledges that some hostels and apartments require more notice and may charge a higher cancellation fee - where this is the case it will be notified to the student.

A refund will be made of the unused accommodation fee less the applicable notice period of 4 weeks and the applicable change fee. Refunds will be calculated based on the total accommodation weeks booked, including periods of extension. Used weeks of discounted accommodation packages will be charged at the full brochure weekly rate when any refund is calculated.

Some residential options may have additional terms and conditions relating to reservation cancellation, including minimum notice period; these will be included in any refund calculation.

All refunds must be paid to the original payer's bank account or credit card and cannot be made to any other person.

13. Passports and visas

The participant will be responsible for complying with the security regulations, the regulations governing the obtaining of a visa, and the health regulations required to enter and stay in Switzerland/Germany/France (as applicable). Under no circumstances will Alpadia be held liable for any notice of refusal to enter or stay in Switzerland/Germany/France given to a participant. Information relating to the regulations governing security, health and obtaining a visa can be obtained from the Swiss/German/French Embassy or Consulate in the participant's home country. No reimbursement will be made, either in full or in part, in the event that a participant is refused permission to enter or stay in Switzerland/Germany/France as a result of their own fault or conduct. Alpadia will provide a letter of invitation to the participant to assist with the visa application following receipt of all the costs of the language course from the participant/contract partner.

14. Accident/health insurance

Every participant will be solely responsible for obtaining accident and health insurance cover valid for the country in which they intend to stay for the whole duration of their stay. This insurance is mandatory during a participant's study at Alpadia and can be purchased through Alpadia or other insurance providers. In the event that any participant does not have such cover at the time of li

registration, an appropriate insurance policy covering these risks can be purchased from Alpadia if requested.

15. Damage caused by participants / civil liability

Prior to arrival at Alpadia, each participant must take out a policy of insurance to cover any loss/damage which they may cause during the course of their stay. In any event, and even if a participant does not feel that it is appropriate for them to take out such insurance, the participant and/or contract partner shall remain liable for any losses, expenses and claims suffered or incurred by Alpadia, its commercial partners and any other third party caused by the conduct of the participant unless such losses, expenses or claims are attributable to any act or omission of Alpadia.

16. Obligations of participants

Participants are required to attend the course and to arrive on time. They are responsible for choosing a course which is appropriate for their level of capability. Failure to attend the course, or irregular attendance, or any disruption to lessons caused by an individual participant's behaviour will entitle Alpadia to expel the participant. The same sanction may apply to inappropriate behaviour in the place of accommodation offered by Alpadia. Alpadia will not refund or pay compensation for any part of the missed course or accommodation or any additional travel costs incurred caused by a participant's expulsion.

17. Accommodation: Arrivals and departures

All accommodation is booked from the Sunday before the course start date until the Saturday morning after the course end date, unless otherwise advised. A partial week may be counted as 1 week's accommodation. Check-in times and check-out times are included on the fact sheet for your chosen accommodation unless special arrangements have been made with the accommodation provider or an alternative check-in/check-out time is noted in your booking confirmation. Students arriving between 22:30 – 06:00 may be asked to book alternative accommodation in a hotel on their first night due to late/early arrival at accommodation, or be charged an extra night of accommodation. Students wishing to book an extra night on arrival (for Saturday arrivals) and/or on departure (for Sunday departures) can do so at a rate that is 25% of the weekly accommodation rate for their chosen accommodation.

18. Duration of lessons

All language lessons are 45 minutes in duration unless otherwise stated. Courses run from Monday to Friday and lessons are scheduled in the morning or the afternoon. Alpadia cannot guarantee a specific timetable.

19. Substitution policy

If, after taking the online placement test, a participant is found to be at a level which is not appropriate for their booked course, the school reserves the right to place the participant in an appropriate level class, which may have fewer lessons and a different curriculum. Participants who do not have the ability to follow any course on offer may be required to terminate their studies with Alpadia. We also reserve the right to cancel courses at short notice due to insufficient demand.

20. Course changes

Alpadia has the right to change accommodation options, course dates, course curricula, instructors, locations and courses at any time at its discretion. However, in cases where the course is rescheduled prior to the start of the first course and the new date is unacceptable to the participant, all fees will be refunded.

21. Prices

Alpadia may change prices due to tax increases, governmental actions or any other event or circumstance beyond Alpadia's reasonable control or circumstances that may affect the operations of the business. Prices are valid for courses starting in 2024.

22. Learning materials

All learning materials will be made available to participants during their course and are included in the tuition fee.

23. Late arrival

In order to avoid disturbing the class, any participant who arrives more than 15 minutes late should wait for the break before joining the class.

24. Meals and classes missed

No refunds or substitutions will be made for meals or classes missed due to public holidays, exams, excursions, internships (if applicable), first day orientation or other obligations that fall outside the normal schedule.

25. Inconsistent attendance

Any participant who does not attend all of the classes which make up the language course will not be entitled to any reimbursement for missed classes. Participants will not be entitled to receive their certificate for completing the course unless they attend at least 80% of the classes.

26. Complaints

We work hard to ensure that you receive the level of service that you require. However, there may be times when you are not completely happy with the level of service that you receive. All of the staff at Alpadia are available for you to talk to if you have any concerns and we promise to respond to your questions within 2 working days. If you

are unhappy or dissatisfied with the service we provide, please follow the steps listed below in order to seek a solution to the problem.

Step One

Teaching: If you have concerns or worries about your class or learning please talk to your teacher first. After talking to your teacher, if you are still unhappy, please speak to the Director of Studies.

Accommodation: If you have concerns regarding the accommodation service we provide then please talk to the Student Support Manager.

Administration: If you are unhappy with the way your course has been administered e.g. payments, dates, then please speak to the Customer Care Manager.

Step Two

If you are not happy with the answer provided by these staff members, then please raise your concerns with the Centre Manager.

Final Step

If you are still not satisfied with our responses, then you may wish to raise your complaint with the professional organisation that accredits the school. The contact details are below:

Equals

29/30 Fitzroy Square,
London, W1T 6LQ,
United Kingdom

27. Changes affecting prices, dates or services

Until such time as a participant receives the confirmation of registration, Alpadia may change the dates and prices of language courses published on the internet, brochure or any other communication tools at any time. Following confirmation of registration between Alpadia and the participant, Alpadia may change its programme of services, provided that the changes are minor, unavoidable and do not in any way adversely impact the teaching services to be provided to the participant. In the event that the "key" services provided by Alpadia are affected by major changes, participants may withdraw or apply to join a different course of the same value, if Alpadia is in a position to provide this. Alpadia must notify participants of any changes immediately and participants must notify Alpadia as soon as possible after receipt of such notification of their intention to exercise their rights set out in this clause.

28. Minimum number of participants

In the event that it is not possible to achieve the minimum number of participants required for a language course (4 persons for a group course), Alpadia will notify the participant and contract partner at least one week prior to the commencement date of the course. If Alpadia is unable to provide an alternative course, Alpadia will undertake to reimburse all fees paid to date by the participant/contract partner. Under no circumstances will Alpadia pay compensation for any inconvenience or loss of time. In the event that none of the courses are appropriate for the participant's level of ability, Alpadia reserves the right to substitute the group course for private tuition and adapt the number of lessons accordingly. The number of hours of private tuition will depend on the amount paid by the participant and the number of participants.

29. Activities

Depending on the weather conditions or other circumstances beyond the control of Alpadia and its organisation, Alpadia reserves the right to cancel one or more of the scheduled activities available at each school. In that event, Alpadia undertakes to substitute the cancelled activities with a suitable alternative activity.

30. Public holidays

The contract partner acknowledges that schools are generally closed on local public holidays, and acknowledges that this will not give rise to any claim for compensation against Alpadia for missed lessons or otherwise.

31. Force majeure:

Alpadia shall not be in breach of these terms and conditions nor liable for delay in performing, or failure to perform, any of its obligations under this agreement if such delay or failure result from events, circumstances or causes beyond its reasonable control including but not limited to: fire; natural disaster; acts of government; failure of suppliers or sub-contractors; labour disputes or civil unrest; criminal, terrorist or threatened terrorist activities of any kind; pandemics and other public health emergencies; any negligent or wilful act or failure to act by any third party; or any other cause beyond the direct control of Alpadia (each a "Force Majeure Event").

Where any course is cancelled by Alpadia as a result of a Force Majeure Event, it is acknowledged that:

- Alpadia has the right to retain a pro-rated amount of any fees paid where services have been partially provided. Any fees retained will be proportionate to the services provided;
- Alpadia shall be entitled to deduct any irrecoverable fees it suffers from the amount of any refund, for example cancellation fees or similar;
- Alpadia shall have the right to provide a substitute course to the cancelled course, including online and virtual alternatives; and
- Any third party services procured by Alpadia on behalf of the participant, including but not limited to accommodation,

transfers or insurance shall remain subject to the terms of the respective provider's terms and Alpadia shall not be liable for such third party services or any act or omission of such third party.

32. Liability

To the extent permitted by law, the liability of Alpadia, its group companies, their directors, officers, employees, affiliates, agents and partners with respect to losses arising from negligence, breach of contract or otherwise will be limited in all circumstances to the full amount paid to Alpadia for the particular language course. Such companies and persons will in no circumstances have any liability for indirect or consequential losses or damages. Under no circumstances can Alpadia be held liable for any loss resulting from illness, accident or inconvenience caused by poor service provided by any agent appointed by Alpadia. Furthermore, Alpadia will not be responsible for the loss of any valuables, personal items, money, or other possessions unless such losses arise from the gross negligence of Alpadia.

33. Safety and security

Alpadia is authorised to take all reasonable action as required to ensure the well-being, safety and good health of the participants. Alpadia is also entitled to take all necessary measures to provide a participant with any appropriate medical care in the event of necessity. Any costs arising from such medical attention will be borne by the participant, or their parent/guardian if they are a minor. A written release/authorisation signed by a participant's parent or guardian will be required for minors.

34. Protection of personal data

Your privacy is important to us. It is important that you read our privacy policy which informs you about how we process your personal data. This can be found at:

<https://www.alpadia.com/en/privacy.htm>.

35. Promotional material

The participant (or where applicable, their parents or guardian) agrees that the participant's photographs, videos, artwork or other works as well as recorded or written testimonials and details of the participant's accomplishments may be used worldwide by Alpadia S.A., or by a third party agent of Alpadia S.A., for promotional purposes including in its printed and online marketing materials and on any social media network without further consent or notifications. Participants may be photographed and/or filmed during their language course with Alpadia S.A. and they agree to this material being used for Alpadia S.A. worldwide promotional purposes, both printed and online. The participant, or their parent or guardian, also agrees to give consent to Alpadia S.A. to store or transfer across international borders, copies of the participant's images, videos and testimonials solely for the promotional purposes outlined above. These terms and conditions will be deemed non-applicable only if the participant or their parent or guardian specifically withdraws their consent, in writing, at any time after registration.

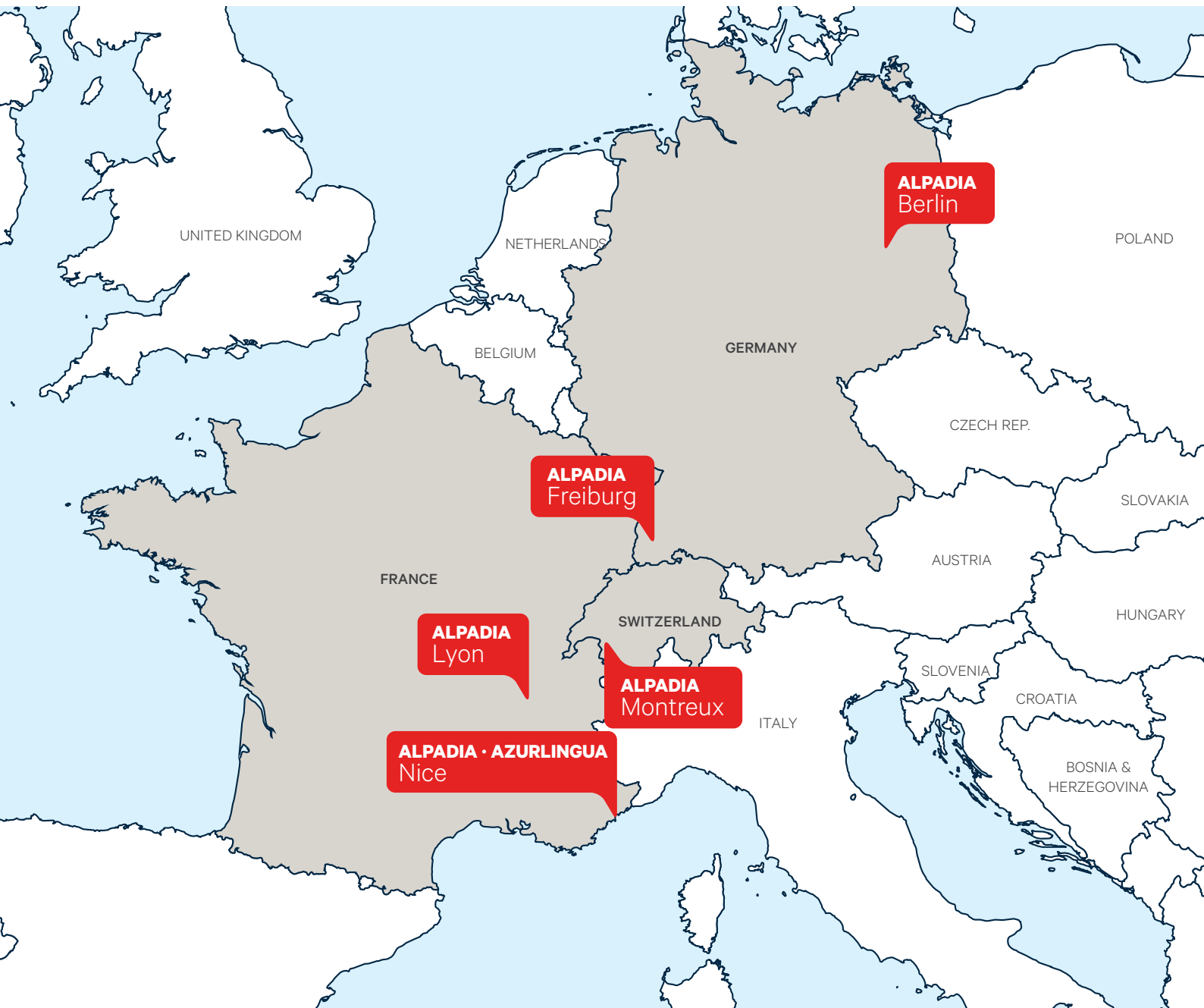
36. Applicable law and jurisdiction

Swiss law will apply exclusively to the contractual relationship between Alpadia and the participant and/or contract partner. Jurisdiction will lie with the courts of Montreux, Switzerland.

37. General

As a member of the Kaplan group of companies, Alpadia is subject to laws imposed by various jurisdictions on conducting business with sanctioned parties and countries. It is our policy to fully comply with applicable sanction restrictions, including those imposed by the United States, United Kingdom, Switzerland and the European Union. While we are not prohibited from transacting with individuals with a connection to a sanctioned country, we need to ensure that no part of the transaction will be in contravention of US sanctions laws under a series of prescribed compliance checks, including verification as to source of funding and persons providing such funding, before any monies or services can be transacted.

Alpadia Schools



ALPADIA
LANGUAGE SCHOOLS
by Kaplan International

KAPLAN INTERNATIONAL
LANGUAGES

Contact us: info@alpadia.com | +41 21 621 88 88

Alpadia Language Schools © 1996-2025 | All rights reserved.

www.alpadia.com